

Cross recesses for screws

FINESZ 泛微

The European Standard EN ISO 4757:1994 has the status of a
British Standard

UDC 621.882.215.6

Cooperating organizations

The European Committee for Standardization (CEN), under whose supervision this European Standard was prepared, comprises the national standards organizations of the following countries:

Austria	Oesterreichisches Normungsinstitut
Belgium	Institut belge de normalisation
Denmark	Dansk Standard
Finland	Suomen Standardisoimisliitto, r.y.
France	Association française de normalisation
Germany	Deutsches Institut für Normung e.V.
Greece	Hellenic Organization for Standardization
Iceland	Technological Institute of Iceland
Ireland	National Standards Authority of Ireland
Italy	Ente Nazionale Italiano di Unificazione
Luxembourg	Inspection du Travail et des Mines
Netherlands	Nederlands Normalisatie-instituut
Norway	Norges Standardiseringsforbund
Portugal	Instituto Português da Qualidade
Spain	Asociación Española de Normalización y Certificación
Sweden	Standardiseringskommissionen i Sverige
Switzerland	Association suisse de normalisation
United Kingdom	British Standards Institution

This British Standard, having been prepared under the direction of the Engineering Sector Board, was published under the authority of the Standards Board and comes into effect on 15 January 1995

© BSI 08-1999

The following BSI references relate to the work on this standard:
Committee reference GME/9
Draft for comment 82/70263 DC

ISBN 0 580 23626 9

Amendments issued since publication

Amd. No.	Date	Comments

Contents

	Page
Cooperating organizations	Inside front cover
National foreword	ii
<hr/>	
Foreword	2
1 Scope and field of application	3
2 Recess type H	3
3 Recess type Z	6
<hr/>	
National annex NA (informative) Committees responsible	Inside back cover
<hr/>	
Table 1 — Recess type H	3
Table 2 — Gauge dimensions for recess type H	5
Table 3 — Recess type Z	7
Table 4 — Gauge dimensions for recess type Z	9
<hr/>	

National foreword

This British Standard has been prepared under the direction of the Engineering Sector Board and is the English language version of EN ISO 4757:1994 *Cross recesses for screws*, published by the European Committee for Standardization (CEN). It is identical with ISO 4757:1983, published by the International Organization for Standardization (ISO). EN ISO 4757:1994 was produced as a result of international discussions in which the United Kingdom took an active part.

A British Standard does not purport to include all the necessary provisions of a contract. Users of British Standards are responsible for their correct application.

Compliance with a British Standard does not of itself confer immunity from legal obligations.

FINESZ 泛微

Summary of pages

This document comprises a front cover, an inside front cover, pages i and ii, the EN ISO title page, pages 2 to 10, an inside back cover and a back cover.

This standard has been updated (see copyright date) and may have had amendments incorporated. This will be indicated in the amendment table on the inside front cover.

UDC 621.882.215.6

Descriptors: Fasteners, screws, cruciform recessed screws, dimensions

English version

Cross recesses for screws

(ISO 4757:1983)

Empreintes cruciformes pour vis
(ISO 4757:1983)

Kreuzschlitze für Schrauben
(ISO 4757:1983)

This European Standard was approved by CEN on 1994-07-26. CEN members are bound to comply with the CEN/CENELEC Internal Regulations which stipulate the conditions for giving this European Standard the status of a national standard without any alteration.

Up-to-date lists and bibliographical references concerning such national standards may be obtained on application to the Central Secretariat or to any CEN member.

This European Standard exists in three official versions (English, French, German). A version in any other language made by translation under the responsibility of a CEN member into its own language and notified to the Central Secretariat has the same status as the official versions.

CEN members are the national standards bodies of Austria, Belgium, Denmark, Finland, France, Germany, Greece, Iceland, Ireland, Italy, Luxembourg, Netherlands, Norway, Portugal, Spain, Sweden, Switzerland and United Kingdom.

CEN

European Committee for Standardization
Comité Européen de Normalisation
Europäisches Komitee für Normung

Central Secretariat: rue de Stassart 36, B-1050 Brussels

Foreword

This European Standard has been taken over by the Technical Committee CEN/TC 185, Threaded and non-threaded mechanical fasteners and accessories, from the work of ISO/TC 2, Fasteners, of the International Organization for Standardization (ISO).

This European Standard shall be given the status of a national standard, either by publication of an identical text or by endorsement, at the latest by January 1995, and conflicting national standards shall be withdrawn at the latest by January 1995.

According to the CEN/CENELEC Internal Regulations, the following countries are bound to implement this European Standard: Austria, Belgium, Denmark, Finland, France, Germany, Greece, Iceland, Ireland, Italy, Luxembourg, Netherlands, Norway, Portugal, Spain, Sweden, Switzerland, United Kingdom.

FINESZ 泛微

1 Scope and field of application

This International Standard defines two types of cross recesses for screws:

- recess type H;
- recess type Z.

Included in this International Standard is a method of penetration gauging for both types.

2 Recess type H

2.1 Dimensions

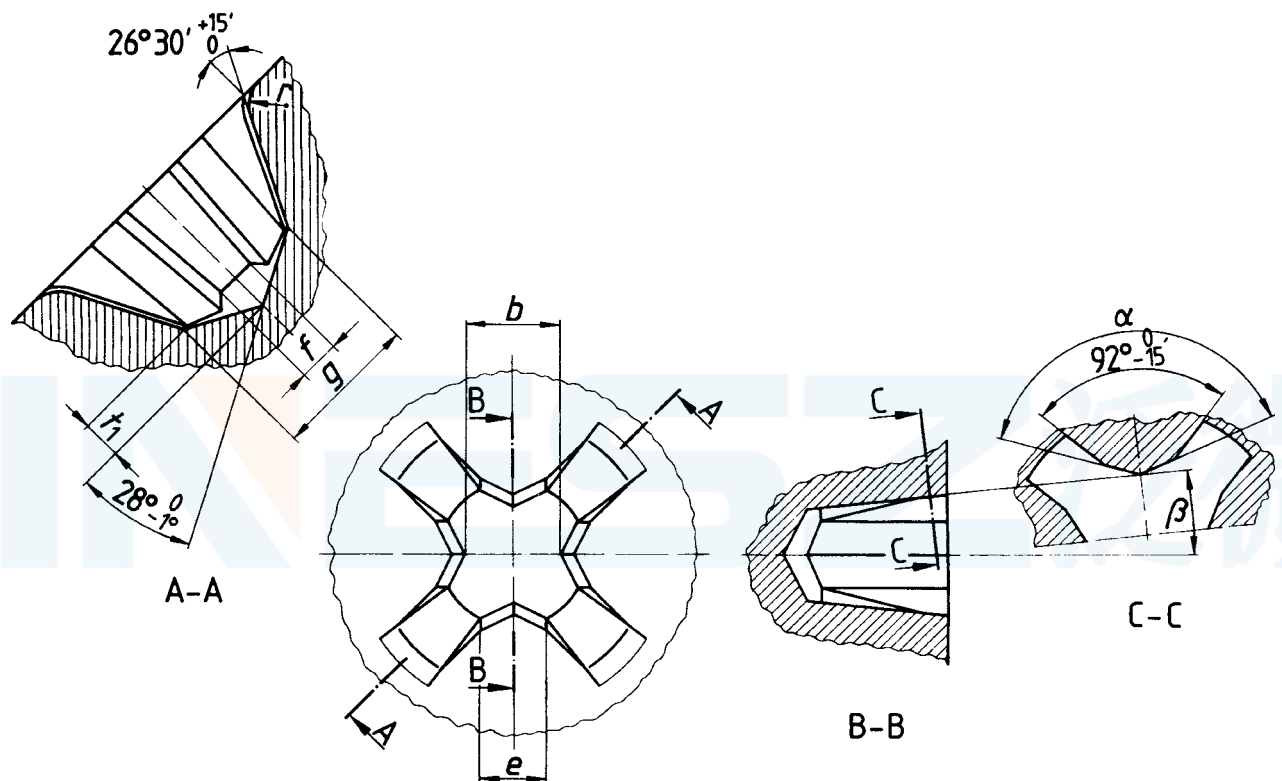


Table 1 — Recess type H

Dimensions in millimetres

Recess No.	0	1	2	3	4	
b	$\begin{matrix} 0 \\ -0,03 \end{matrix}$	0,61	0,97	1,47	2,41	3,48
e		0,26 – 0,36	0,41 – 0,46	0,79 – 0,84	1,98 – 2,03	2,39 – 2,44
g	$\begin{matrix} +0,05 \\ 0 \end{matrix}$	0,81	1,27	2,29	3,81	5,08
f		0,31 – 0,36	0,51 – 0,56	0,66 – 0,74	0,79 – 0,86	1,19 – 1,27
r	nom.	0,3	0,5	0,6	0,8	1
t_1	ref.	0,22	0,34	0,61	1,01	1,35
α	$\begin{matrix} 0 \\ -15' \end{matrix}$	^a	138°	140°	146°	153°
β	$\begin{matrix} +15' \\ 0 \end{matrix}$	7°	7°	5° 45'	5° 45'	7°

^aThis will be replaced by r min. 0,25 mm; r max. 0,36 mm.
Dimensions shown are theoretical values.

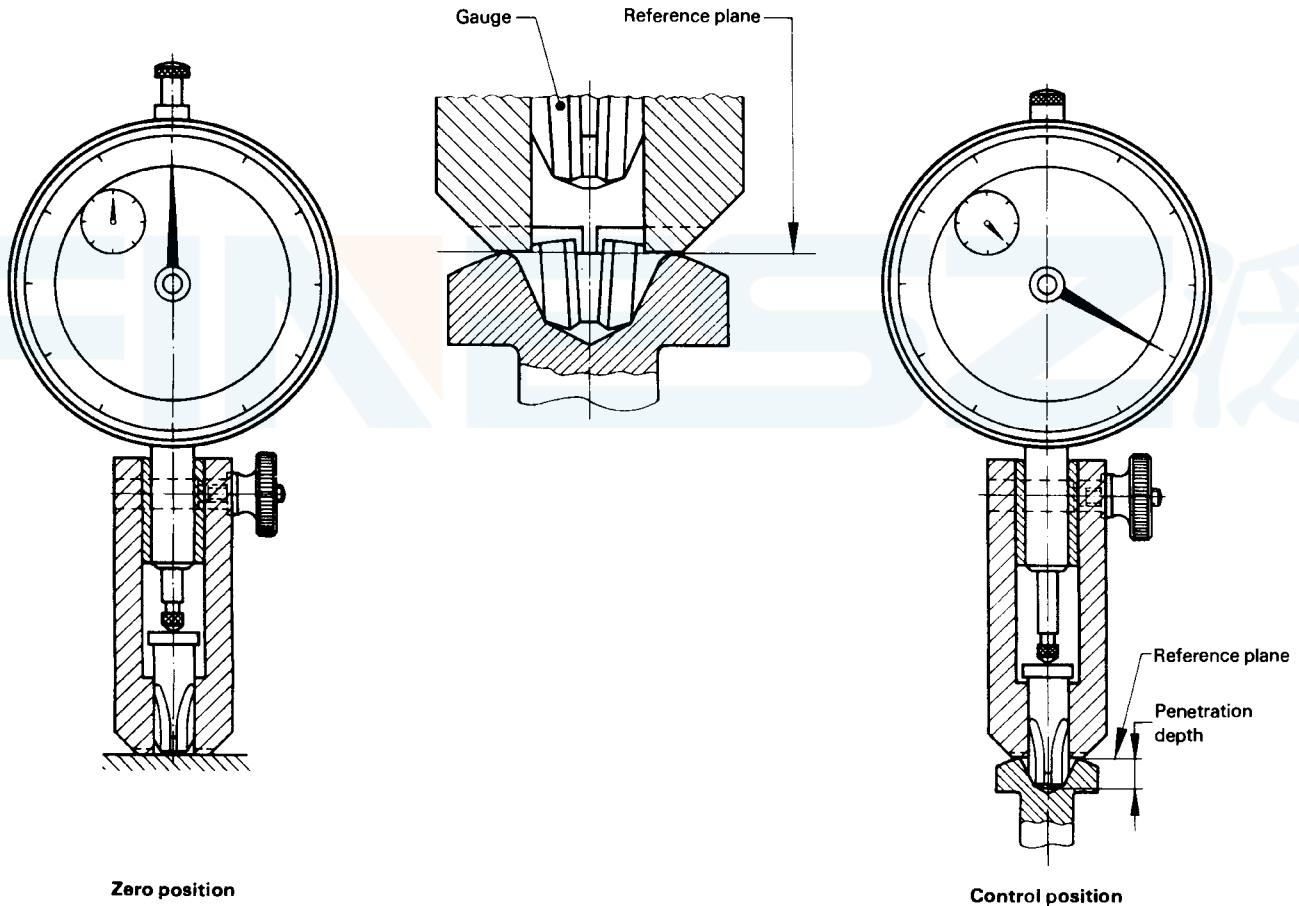
2.2 Recess penetration gauging and gauge dimensions for recess type H

The penetration depth of the depth gauge (minimum dimension) is indicated in the different product standards. It is the test dimension for the usability of the cross recess.

The point of the gauge is identical with the point of the respective screwdriver. A sleeve serves to guide the gauge and fix the reference plane. This plane passes through the point of intersection of the recess wings and the top surface of the screw head. It corresponds thus to the surface of a screw with flat head. In the case of crowned screw heads, it lies below the crown in the transition area from the recess wings to the surface of the head. For these screw heads, the reference plane is fixed with the help of the bearing surfaces of the gauge sleeve.

The penetration depth of the gauge is measured from the reference plane by using a dial gauge. The zero and control positions of the depth gauge can be found on a flat surface.

Due to the permissible error for the core thickness b of the gauge point, an inaccuracy of up to 0,13 mm can arise when measuring the penetration depth.



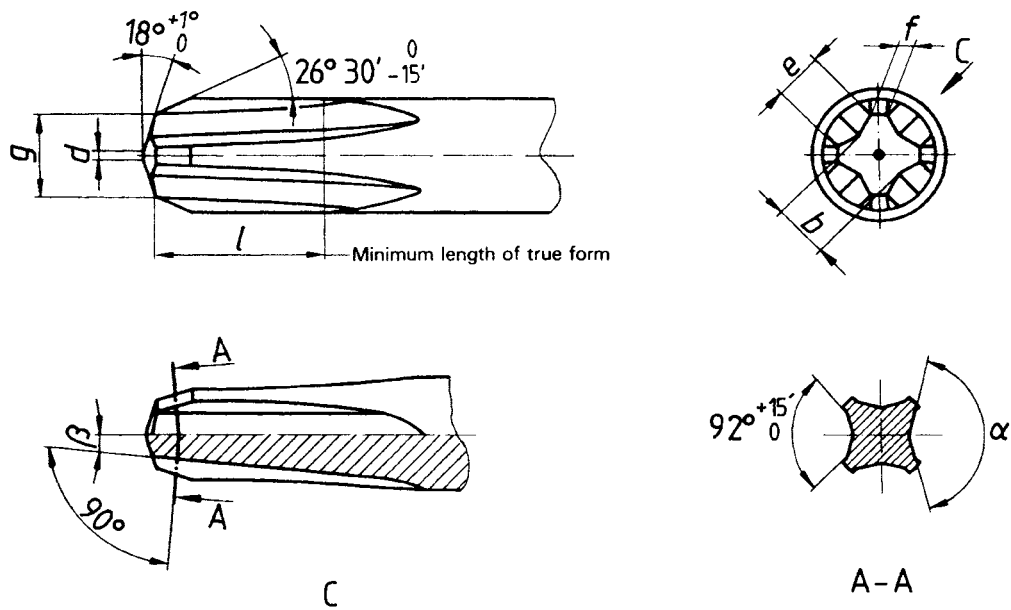


Table 2 — Gauge dimensions for recess type H

Dimensions in millimetres

Gauge No.	0	1	2	3	4	
b	$\begin{matrix} 0 \\ -0,025 \end{matrix}$	0,64	1,001	1,539	2,497	3,574
g	$\begin{matrix} +0,025 \\ 0 \end{matrix}$	0,813	1,27	2,286	3,81	5,08
d	$\begin{matrix} +0,13 \\ 0 \end{matrix}$	0,25	0,38	0,38	0,38	0,38
e	$\begin{matrix} 0 \\ -0,025 \end{matrix}$	0,315	0,513	1,102	2,098	2,738
f	$\begin{matrix} 0 \\ -0,06 \end{matrix}$	0,31	0,51	0,64	0,79	1,12
l	min.	3,17	3,17	4,78	7,14	8,74
α	$\begin{matrix} +15' \\ 0 \end{matrix}$	^a	138°	140°	146°	153°
β	$\begin{matrix} 0 \\ -15' \end{matrix}$	7°	7°	5° 45'	5° 45'	7°

^a This will be replaced by $r = 0,25 \pm 0,025$ mm.

3 Recess type Z

3.1 Dimensions

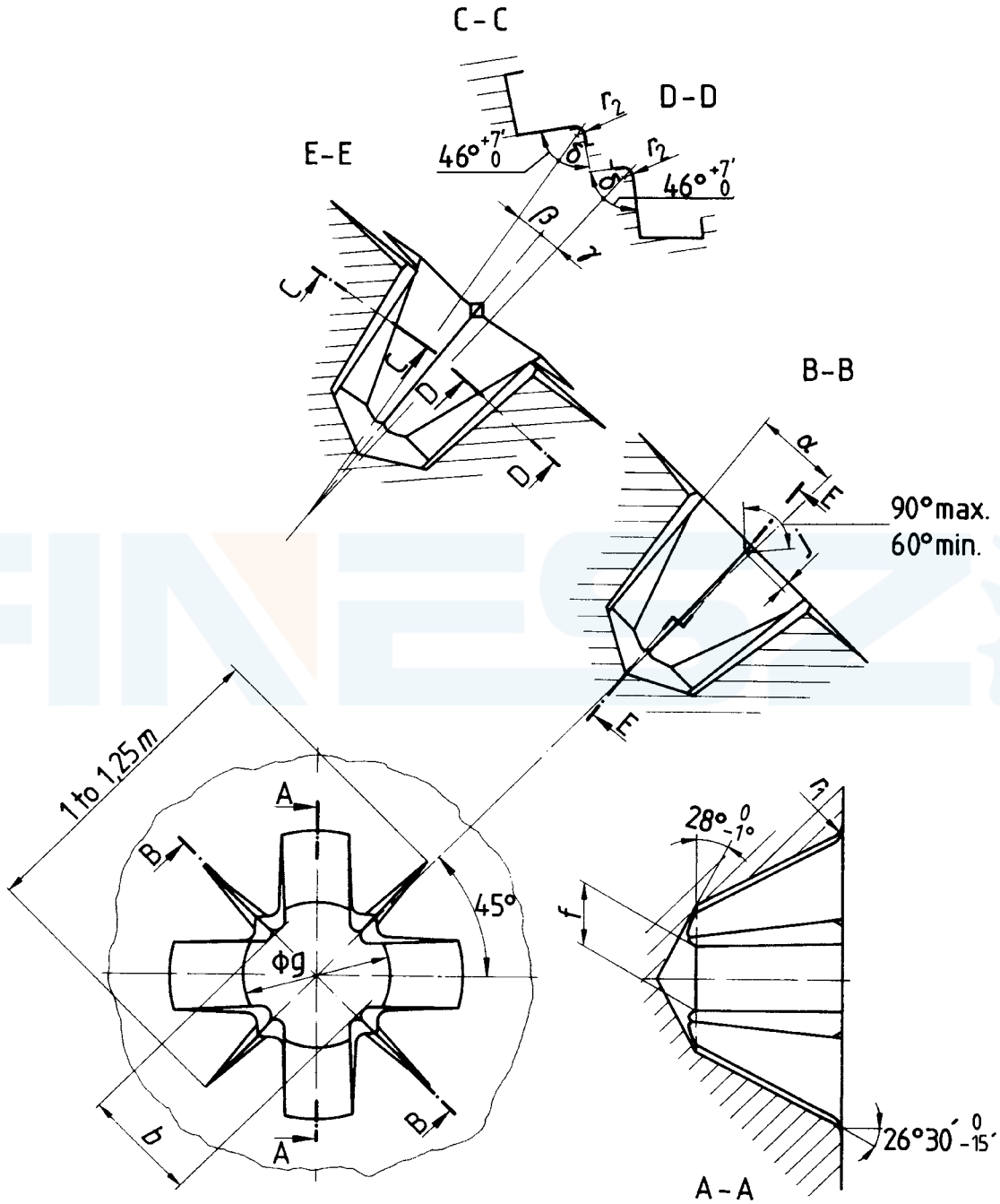


Table 3 — Recess type Z

Dimensions in millimetres

Recess No.	0	1	2	3	4
b 0 -0,05	0,76	1,27	1,83	2,72	3,96
f 0 -0,025	0,48	0,74	1,03	1,42	2,16
g 0 -0,05	0,86	1,32	2,34	3,86	5,08
r_1 max.	0,30	0,30	0,38	0,51	0,64
r_2 max.	0,10	0,13	0,15	0,25	0,38
j max.	0,13	0,15	0,15	0,20	0,20
α +15' 0	7°	7°	5° 45'	5° 45'	7°
β 0 -15'	7° 45'	7° 45'	6° 20'	6° 20'	7° 45'
γ 0 -15'	4° 23'	4° 23'	3°	3°	4° 23'
δ 0 -7'	46°	46°	46°	56° 15'	56° 15'

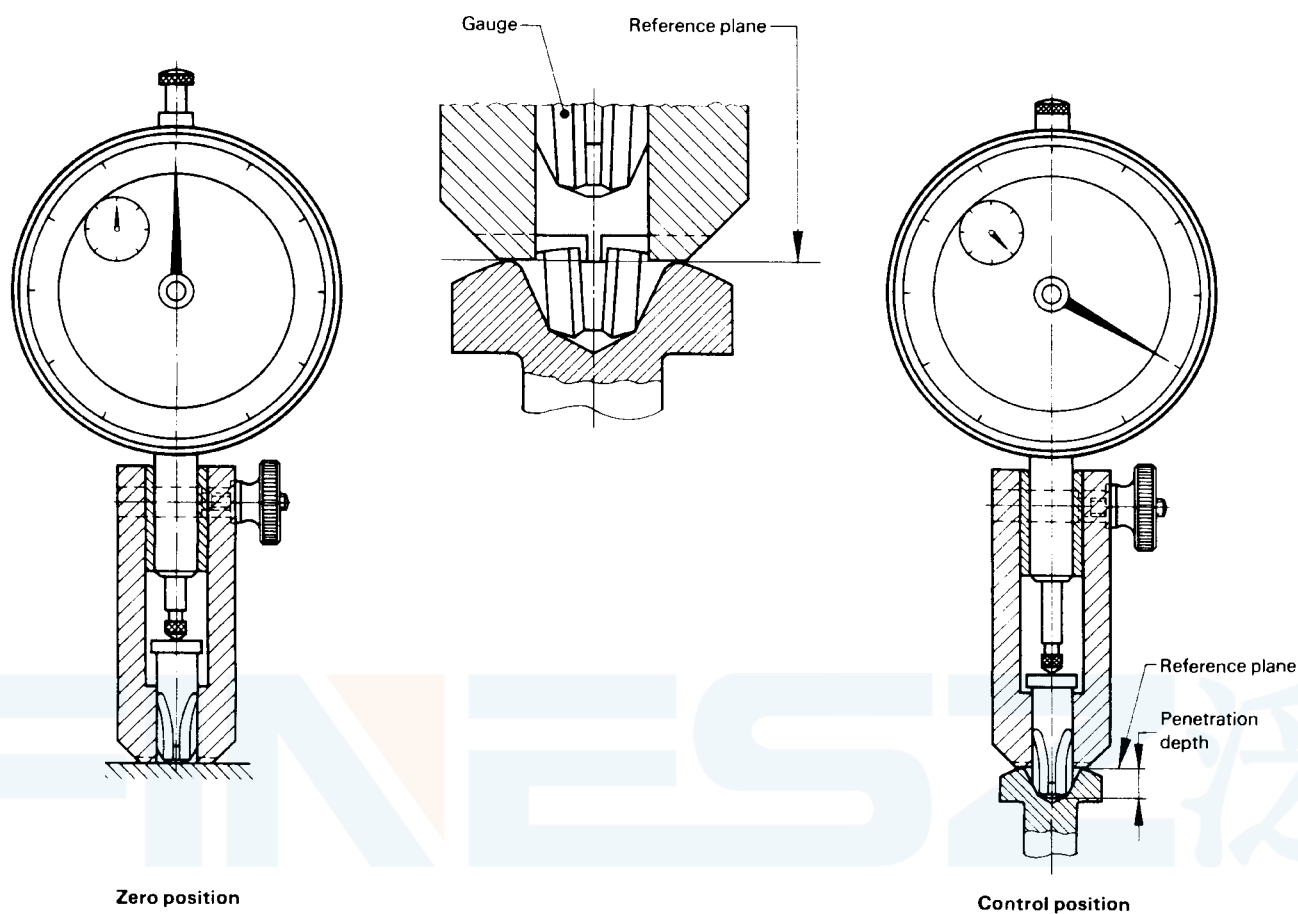
Dimensions shown are theoretical values.

3.2 Recess penetration gauging and gauge dimensions for recess type Z

The penetration depth of the depth gauge (minimum and maximum dimension) is indicated in the different product standards. It is the test dimension for the usability of the cross recess.

The point of the gauge is identical with the point of the respective screwdriver. A sleeve serves to guide the gauge and fix the reference plane. This plane passes through the point of intersection of the recess wings and the top surface of the screw head. It corresponds thus to the surface of a screw with flat head. In the case of crowned screw heads, it lies below the crown in the transition area from the recess wings to the surface of the head. For these screw heads, the reference plane is fixed with the help of the bearing surfaces of the gauge sleeve.

The penetration depth of the gauge is measured from the reference plane by using a dial gauge. The zero and control positions of the depth gauge can be found on a flat surface.



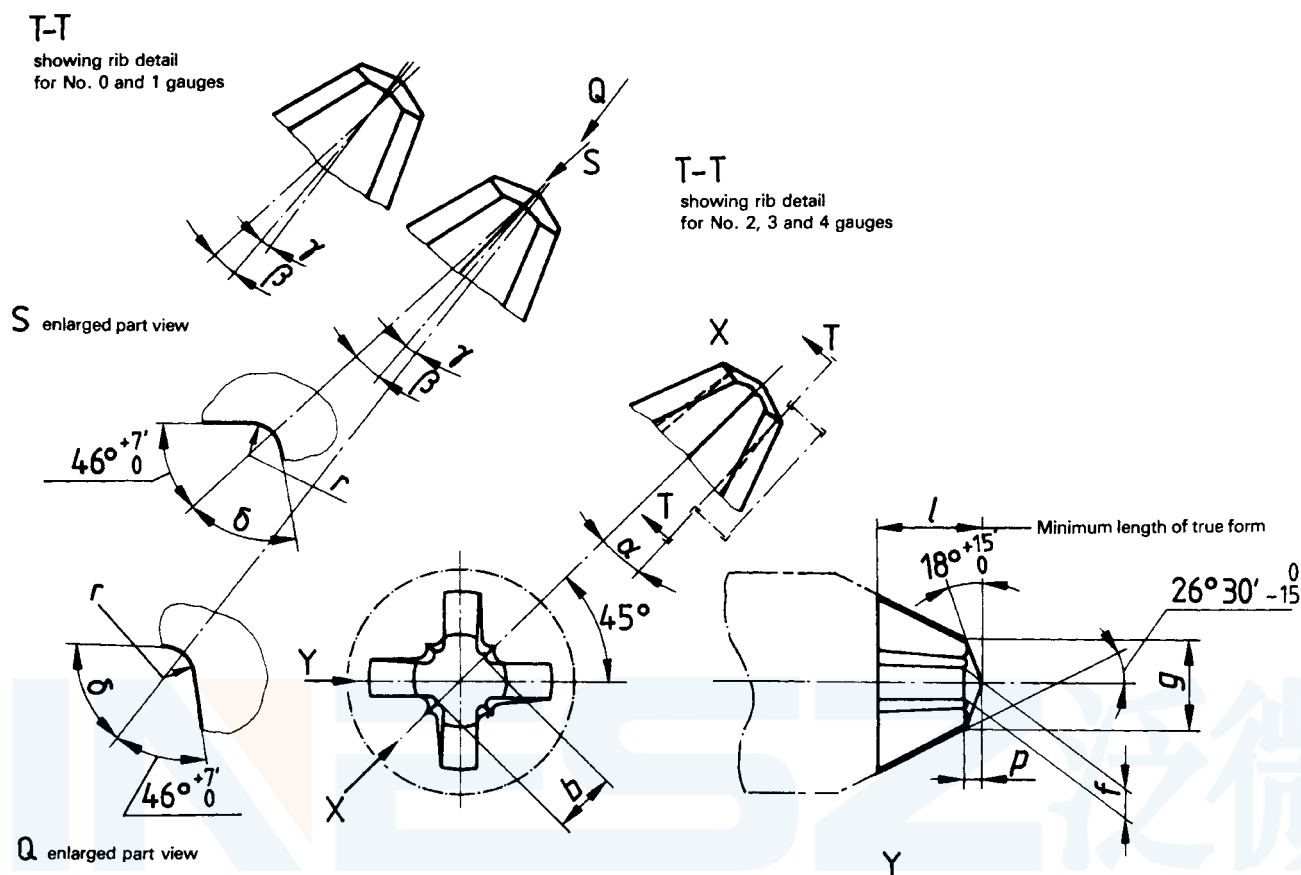


Table 4 — Gauge dimensions for recess type Z

Dimensions in millimetres

Gauge No.		0	1	2	3	4
<i>b</i>	max.	0,711	1,112	1,702	2,591	3,861
	min.	0,673	1,074	1,664	2,553	3,823
<i>f</i>	max.	0,445	0,698	0,990	1,372	2,083
	min.	0,420	0,673	0,965	1,346	2,057
<i>g</i>	max.	0,915	1,397	2,438	3,962	5,182
	min.	0,800	1,372	2,413	3,937	5,157
<i>l</i>	min.	3,17	3,17	4,78	7,14	8,74
<i>p</i>	max.	0,077	0,166	0,331	0,585	0,788
	min.	0,064	0,153	0,318	0,572	0,775
<i>r</i>	max.	0,1	0,13	0,2	0,31	0,51
	min.	0,08	0,1	0,15	0,2	0,36
α		7°	7°	5° 45'	5° 45'	7°
	-6'					
β	+6'	7° 45'	7° 45'	6° 20'	6° 20'	7° 45'
	0					
γ	+6'	4° 23'	4° 23'	3°	3°	4° 23'
	0					
δ	+7'	46°	46°	46°	56° 15'	56° 15'
	0					

FINESZ 泛微

National annex NA (informative)

Committees responsible

The United Kingdom participation in the preparation of this European Standard was entrusted by the Engineering Sector Board to Technical Committee GME/9, upon which the following bodies were represented:

BEAMA Ltd.

British Constructional Steelwork Association Ltd.

British Industrial Fasteners Federation

British Steel Industry

British Steel Industry (Wire Section)

Gauge and Tool Makers' Association

National Association of Fastener Stockholders

Society of Motor Manufacturers and Traders Ltd.

Washer Manufacturers' Association of Great Britain

The following bodies were also represented in the drafting of the standard, through subcommittees and panels:

British Plastics Federation

Portable Electric Tool Manufacturers' Association

Small Electrical Appliances Marketing Association

Timber Trade Federation

BSI — British Standards Institution

BSI is the independent national body responsible for preparing British Standards. It presents the UK view on standards in Europe and at the international level. It is incorporated by Royal Charter.

Revisions

British Standards are updated by amendment or revision. Users of British Standards should make sure that they possess the latest amendments or editions.

It is the constant aim of BSI to improve the quality of our products and services. We would be grateful if anyone finding an inaccuracy or ambiguity while using this British Standard would inform the Secretary of the technical committee responsible, the identity of which can be found on the inside front cover. Tel: 020 8996 9000. Fax: 020 8996 7400.

BSI offers members an individual updating service called PLUS which ensures that subscribers automatically receive the latest editions of standards.

Buying standards

Orders for all BSI, international and foreign standards publications should be addressed to Customer Services. Tel: 020 8996 9001. Fax: 020 8996 7001.

In response to orders for international standards, it is BSI policy to supply the BSI implementation of those that have been published as British Standards, unless otherwise requested.

Information on standards

BSI provides a wide range of information on national, European and international standards through its Library and its Technical Help to Exporters Service. Various BSI electronic information services are also available which give details on all its products and services. Contact the Information Centre. Tel: 020 8996 7111. Fax: 020 8996 7048.

Subscribing members of BSI are kept up to date with standards developments and receive substantial discounts on the purchase price of standards. For details of these and other benefits contact Membership Administration. Tel: 020 8996 7002. Fax: 020 8996 7001.

Copyright

Copyright subsists in all BSI publications. BSI also holds the copyright, in the UK, of the publications of the international standardization bodies. Except as permitted under the Copyright, Designs and Patents Act 1988 no extract may be reproduced, stored in a retrieval system or transmitted in any form or by any means – electronic, photocopying, recording or otherwise – without prior written permission from BSI.

This does not preclude the free use, in the course of implementing the standard, of necessary details such as symbols, and size, type or grade designations. If these details are to be used for any other purpose than implementation then the prior written permission of BSI must be obtained.

If permission is granted, the terms may include royalty payments or a licensing agreement. Details and advice can be obtained from the Copyright Manager. Tel: 020 8996 7070.